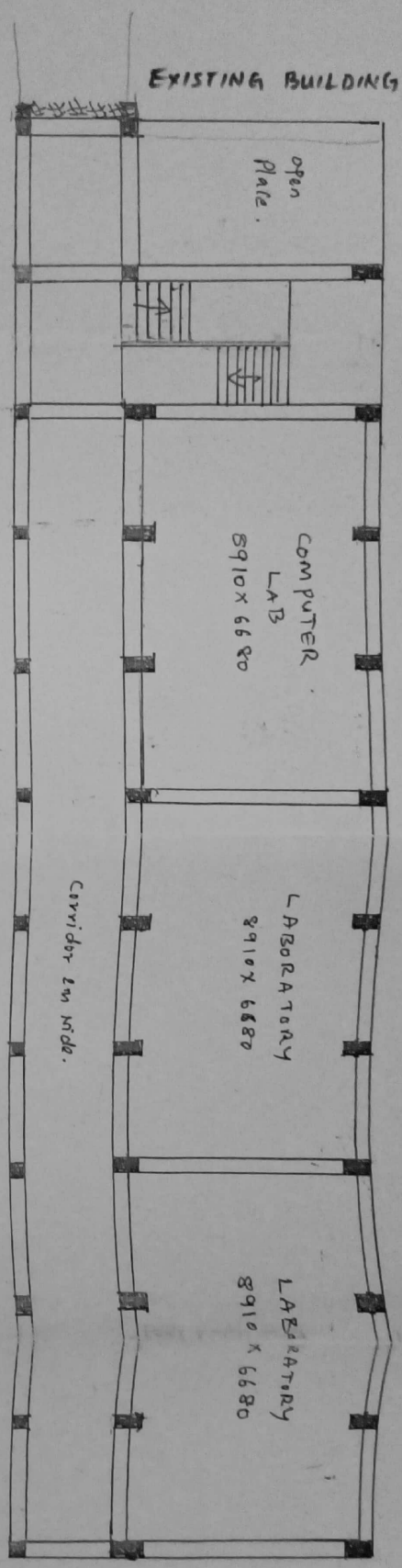
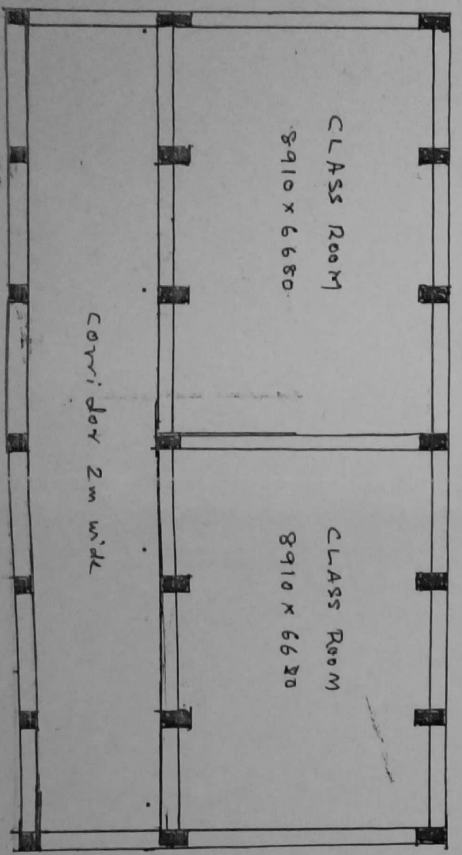


NW:- Construction of Addl. Infrastructure facilities in GVRs Degree college (Group) @ Dhane (NW)



3.00

GROUND FLOOR.



FIRST FLOOR

Principal  
GVRs Govt. Degree College  
Dronachalam,  
KURNOOL District

Deputy Executive Engineer,  
APERC, NANDYAL.